

INTERROLL CHAIN CONVEYOR PM 9720

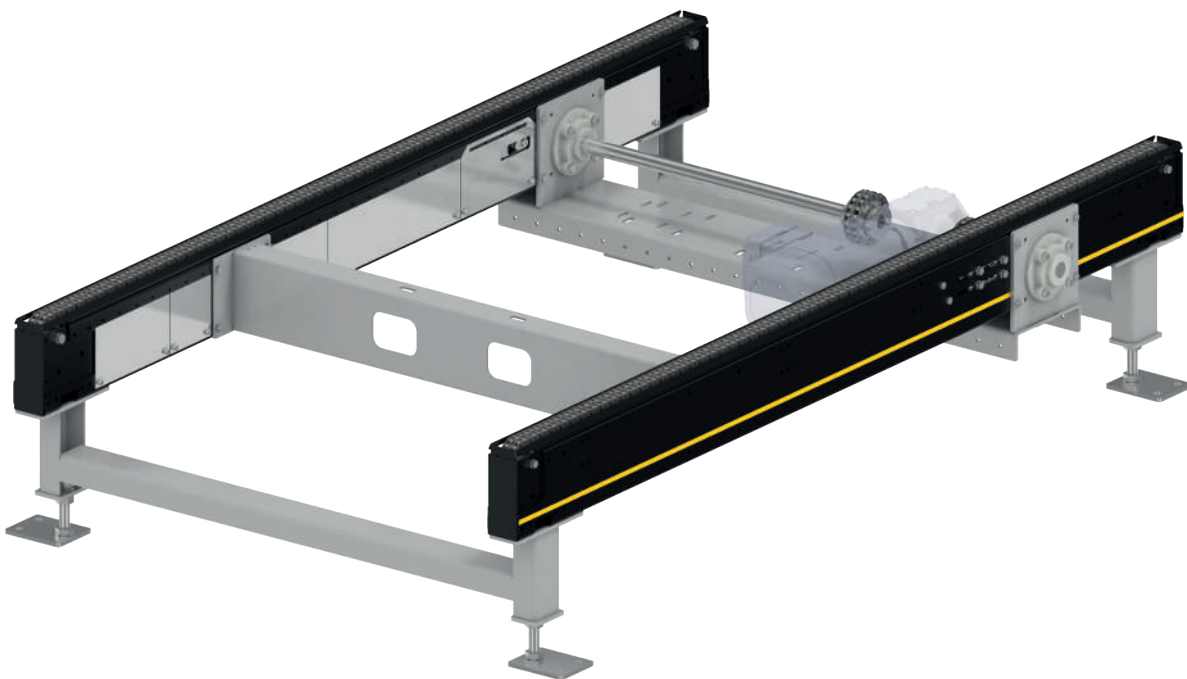


Product description

The chain conveyors are suited for horizontal transport of full and empty pallets. For each chain run, a duplex precision roller chain with straight links is used as a transport chain. The transport chain is guided in a plastic chain guide. The integrated tensioning station with 180° wrap allows for easy re-tensioning of the chain.

The drive station is arranged between the runs. Floor irregularities can easily be compensated with adjustable supports.

The module is available with two or three chain runs. If bagged materials or bulk cargo, poor pallet quality or weights of more than 1,000 kg are being handled, we recommend using a chain conveyor with three chain runs.



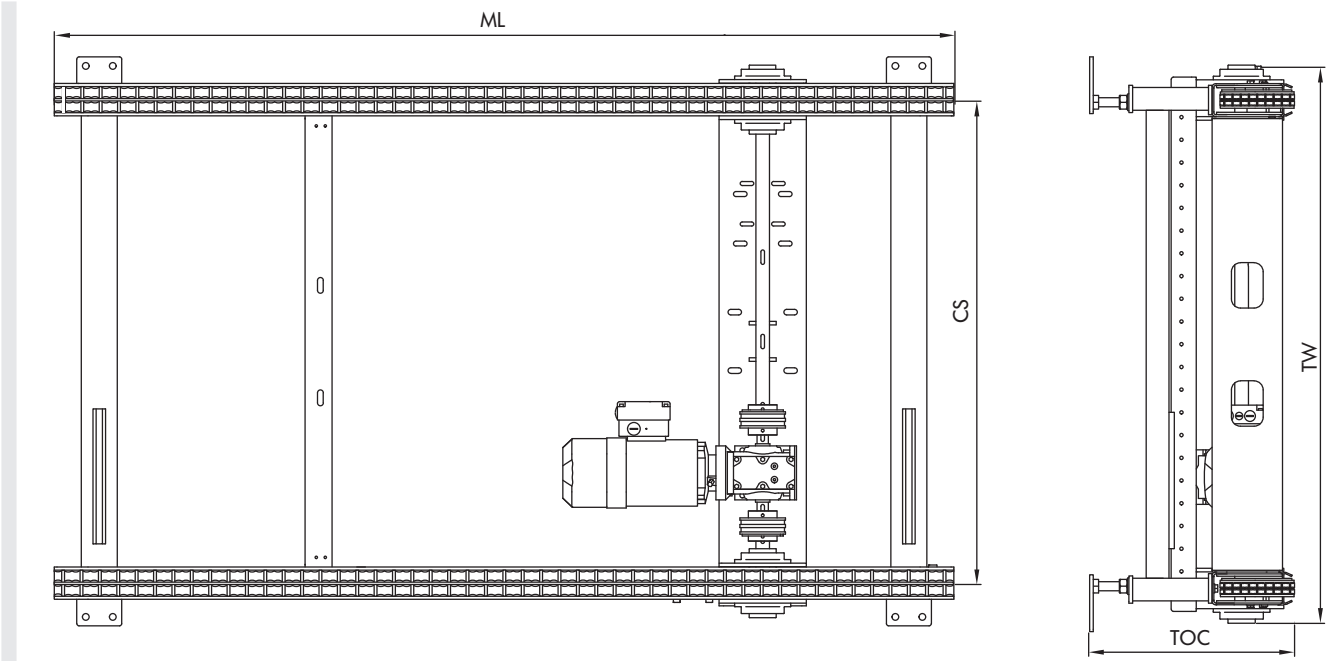
INTERROLL CHAIN CONVEYOR PM 9720

Technical data

General technical data	
Max. load capacity	1500 kg/m
Conveyor speed	0.1 to 0.5 m/s
Ambient temperature	-28 °C to +45 °C (non-condensing) Note: Deep freeze applications are possible only as an option
Incline/decline	Up to max. 4% (for certain motor variants only)
Number of chains	2 or 3
Drive	
Rated voltage	400 V
Motor type	Gear motor
Power	0.37 to 1.5 kW
Roller chain	5/8" x 3/8" duplex with straight bracket joints
Profile	
Dimensions	155 x 72 x 4 mm
Color	Powder-coated, all RAL colors are possible
Material	Steel

INTERROLL CHAIN CONVEYOR PM 9720

Dimensions



Conveying good width (CGW)	850, 1000, 1200 mm
Module width (TW)	755, 905, 1230 mm
Chain pitch (CS)	600, 750, 1075 mm
Conveying height (TOC)	200 to 1200 mm
Module length (ML)	1200 to 5600 mm